

# SUZIE 54 H.P. MARINE DIESEL



## 4LE2 RATINGS:

Intermittant at sealevel (60 degrees)

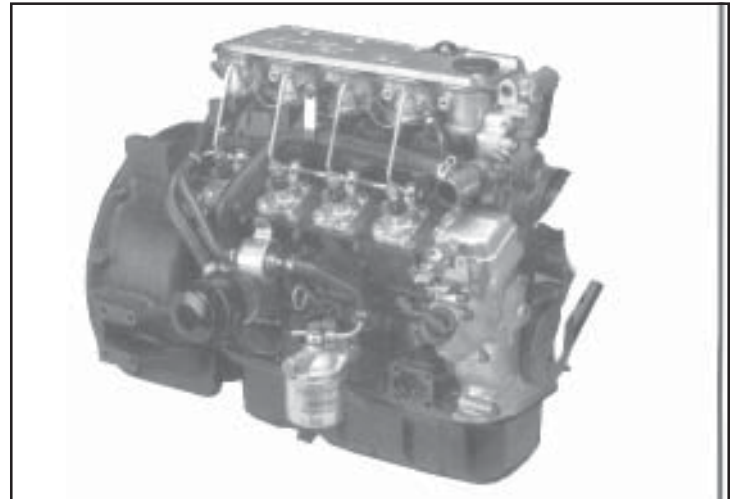
**54 b.h.p. @ 3000 r.p.m.**

Continuous at sealevel (60 degrees)

**48 b.h.p. @ 3000 r.p.m.**

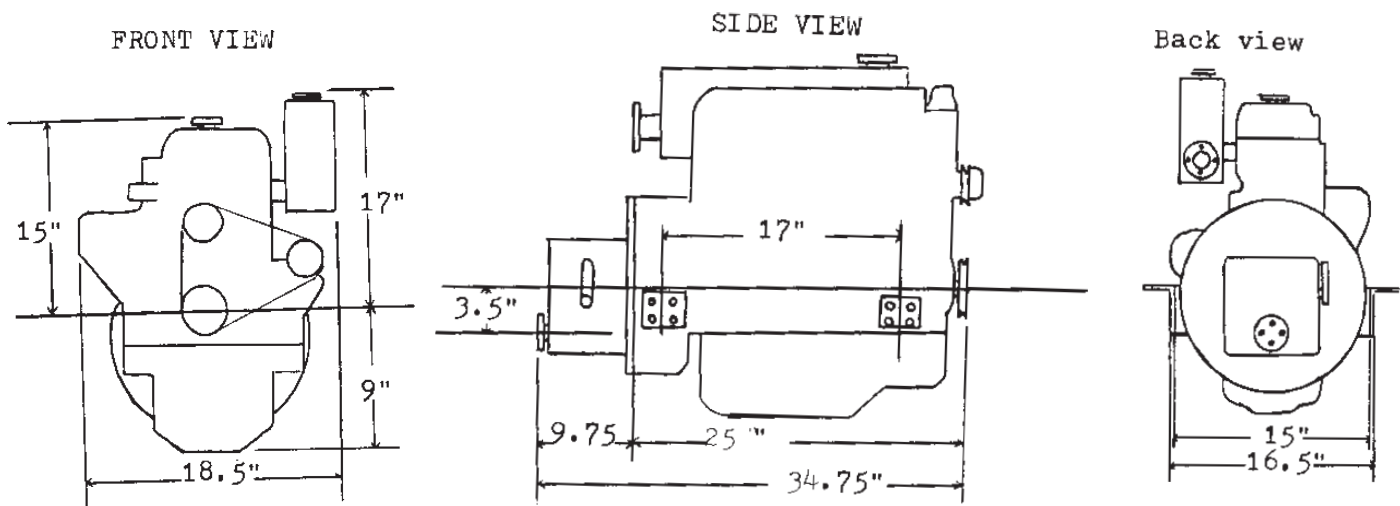
Torque at sealevel (60 degrees)

**106 ft.lbs. @ 2000 r.p.m.**



ENGINE SPECIFICATIONS	MARINE GEAR SPECIFICATIONS
<p>Model Number: <b>Isuzu 4LE2</b>            Type: Four stroke, water cooled 4 cylinder            Combustion: Direct injected, swirl type pre chamber            Bore &amp; Stroke: 3.34in x 3.78in (85mm X 96mm)            Piston Displacement: 133 c.i.d. (2.2 litres)            Engine Rotation: Counter Clockwise facing flywheel            Dry Weight: 425 lbs.(193 kg.) With Gear: 465 lbs.(210kgs.)            Lube Oil Capacity: 8.5 quarts (8 litres)            Coolant Capacity (engine only): 2.9 quarts (2.7 litres)            Aspiration: Natural</p>	<p>Model: <b>ZF25</b>            Engagement: Mechanical            Gear Housing: High strength aluminum            Prop Rotation: Left hand or right hand**            Reduction: Choice of 1.5, 2.0, 2.5, or 3.0 to 1            Oil Grade: ATF            Capacity: 0.8 quarts (0.75 litres)</p> <p><i>* Optional Borg Warner, or gear of choice.            ** Gear cooler may be required            *** Hydraulic Hurth 250 available</i></p>

## ENGINE AND MARINE GEAR DIMENSIONS



# 4LE2 FEATURES AND ACCESSORIES

12 VDC electrical with gear reduction starter  
Glow plug assist starting

SAE#5 bellhousing with SAE 7.5in. overcentre flywheel

E.P.A. Certified with low exhaust emissions

One side maintenance for improved access

Quiet design, with torsional damper pulley and vibration-damping oil pan

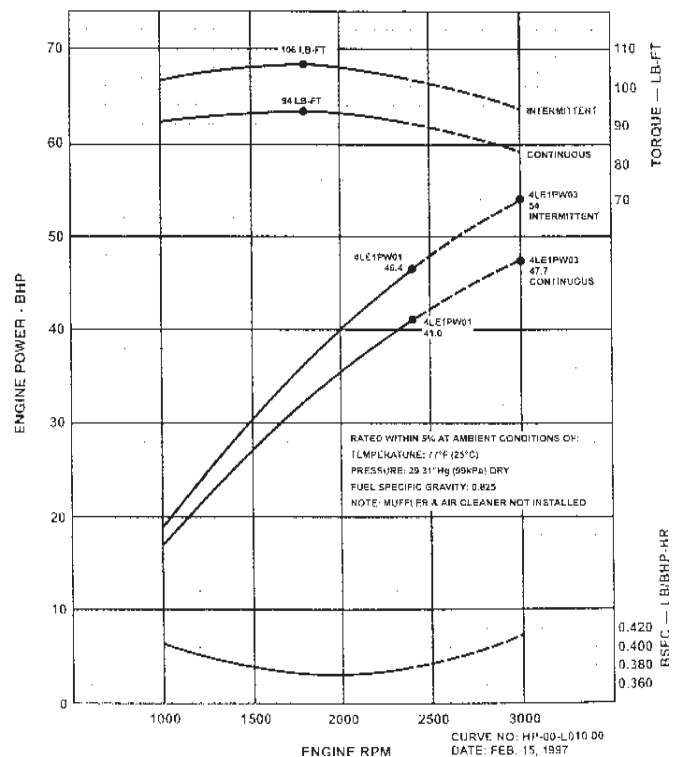
## STANDARD ACCESSORIES

- Set up for keel cooling
  - 51 AMP stock alternator
  - Intake plenum with air cleaner
  - Steel footings with isolators
  - Engine oil change pump
  - \*Water cooled dry exhaust manifold\*  
Lube oil and secondary fuel filters  
15 ft pre-wired gauge panel with:  
*Tach with hour meter, oil p.s.i., water temperature, volt or amp meter, key start, glow plug indicator*
  - Low oil, high temp alarm system
- \*Available with or without expansion tank\*

## OPTIONAL ACCESSORIES

- 90 amp alternator upgrades
- 10ft. or 20ft. wire harness extensions
  - Electrical stop solenoid
  - Dual station
- Bellhousing to gear adapter plate
  - Standard drive disc
- Heat exchanger kit, which includes:
  - 1) remote or engine mounted heat exchanger
  - 2) belt driven or direct coupled half inch water pump  
Jabsco raw water pump
  - 3) optional exhaust mixing elbow

## HORSEPOWER AND FUEL CONSUMPTION CURVES:



### KLASSEN ENGINE CO.

1538 NW 50 TH ST.  
SEATTLE, WA. 98107  
TEL. (206) 784-0148  
FAX. (206) 783-6811  
TOLLFREE 1-888-784-0148  
E-MAIL: seattle@klassenengine.com

### KLASSEN DIESEL SALES

#101-7187 PROGRESS WAY  
DELTA, BC, V4G-1K8  
TEL. (604) 940-6400  
FAX. (604) 940-6500  
E-MAIL: delta@klassenengine.com

### KLASSEN DIESEL SALES

6701 OLDFIELD RD.  
SAANICHTON, BC, V8M-2A1  
TEL/FAX (250) 652-6655  
E-MAIL: victoria@klassenengine.com