

# SUZIE 120 H.P. MARINE DIESEL



## 4BG1T RATINGS:

Intermittant at sealevel (60 degrees)

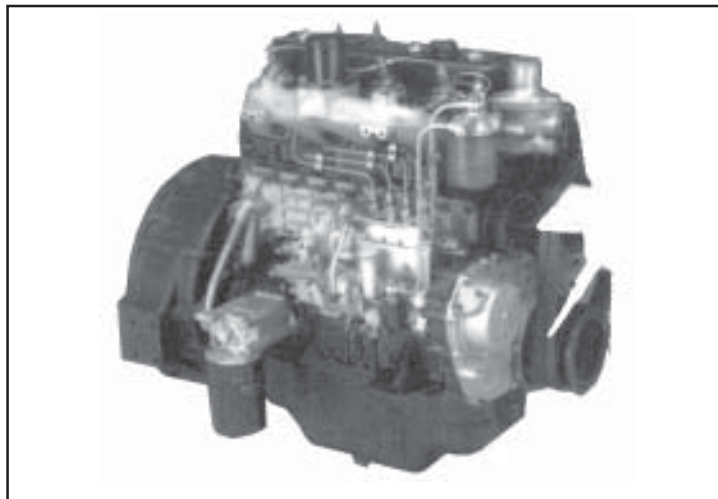
**120 b.h.p. @ 2800 r.p.m.**

Continuous at sealevel (60 degrees)

**98 b.h.p. @ 2400 r.p.m.**

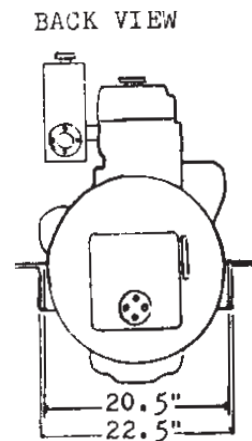
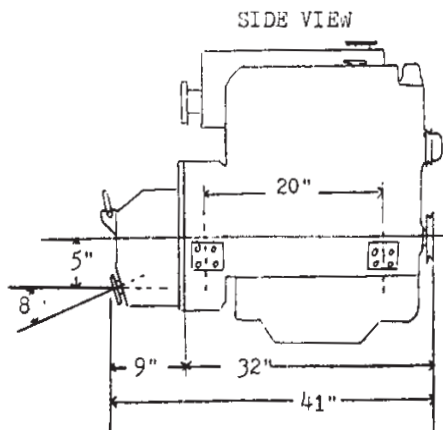
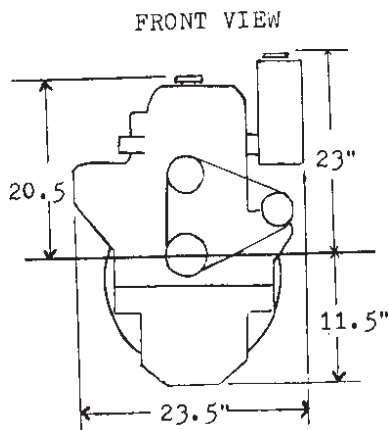
Torque at sealevel (60 degrees)

**284 ft.lbs. @ 1600 r.p.m.**



ENGINE SPECIFICATIONS	MARINE GEAR SPECIFICATIONS
<p>Model Number: <b>Isuzu 4BG1T</b>            Type: Four stroke, water cooled 4 cylinder            Combustion: Direct injected, induction swirl            Bore &amp; Stroke: 4.13in x 4.92in (105mm X 125mm)            Piston Displacement: 264 c.i.d. (4.3 litres)            Engine Rotation: Counter Clockwise facing flywheel            Dry Weight: 885 lbs.(401 kg.). With Gear: 950 lbs.(422kgs.)            Lube Oil Capacity: 13.7 quarts (13 litres)            Coolant Capacity (engine only): 9 quarts (8.5 litres)            Aspiration: Turbocharged</p>	<p>Model: <b>Hurth HSW 450*</b>            Engagement: Hydraulically actuated            Gear Housing: High strength aluminum            Prop Rotation: Left hand or right hand            Reduction: Choice of 1.5, 2.0, 2.5 to 1            Oil Grade: ATF            Capacity: 2.3 quarts (2 litres)            Includes: Fresh water gear cooler  <i>* Optional Borg Warner, or gear of choice.</i></p>

## ENGINE AND MARINE GEAR DIMENSIONS



VISIT OUR WEBSITE: [www.klassenengine.com](http://www.klassenengine.com)

# 4BG1T FEATURES AND ACCESSORIES

12 VDC electrical with gear reduction starter  
 Cold weather glow plug assist starting  
 SAE#3 bellhousing with SAE 10in. overcentre flywheel  
 Replaceable chromard dry liners  
 Direct injection with square combustion chambers for efficiency  
 Oil cooled pistons  
 Tuftrided crankshaft

## STANDARD ACCESSORIES

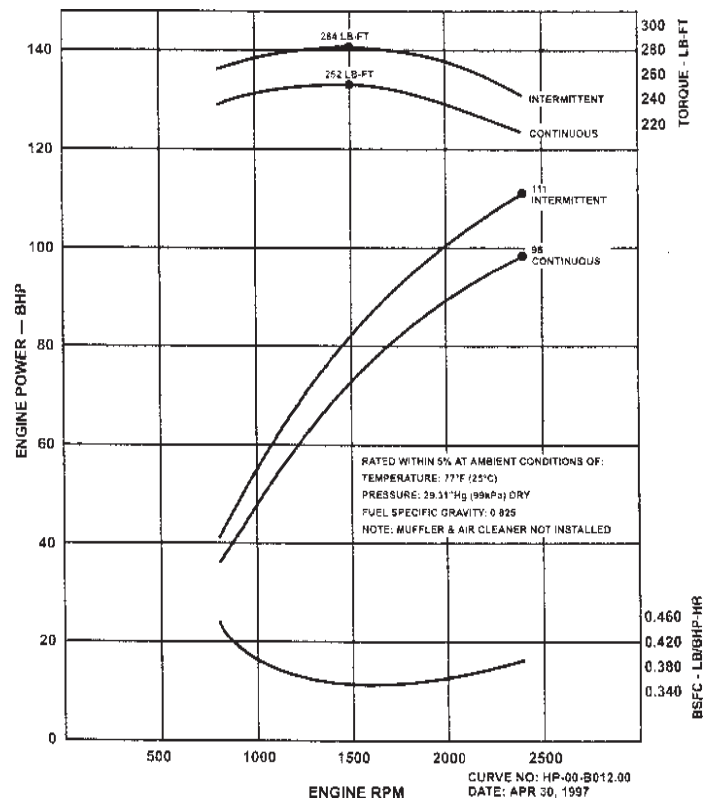
Set up for keel cooling  
 60 AMP stock alternator  
 air cleaner  
 Steel footings  
 Engine oil change pump  
 \*Water cooled dry exhaust manifold\*  
 Lube oil and secondary fuel filters  
 20ft wire harness length

Black plastic panel with:  
 Tach with hour meter, oil p.s.i., water  
 temperature, volt or amp meter,  
 key start, glow plug indicator  
 \*Available with or without expansion tank\*

## OPTIONAL ACCESSORIES

90, 105 and 130 amp alternator upgrades  
 10ft. or 20ft. wire harness extensions  
 Low oil p.s.i./high temp. buzzer alarm  
 vibration isolators  
 Dual stations  
 Bellhousing to gear adapter plate  
 Standard drive disc  
 Heat exchanger kit, which includes:  
 1) remote mounted heat exchanger  
 2) belt driven or direct coupled raw water pump  
 3) optional exhaust mixing elbow

## HORSEPOWER AND FUEL CONSUMPTION CURVES:



### KLASSEN ENGINE CO.

1538 NW 50 TH ST.  
 SEATTLE, WA. 98107  
 TEL. (206) 784-0148  
 FAX. (206) 783-6811  
 TOLLFREE 1-888-784-0148  
 E-MAIL: seattle@klassenengine.com

### KLASSEN DIESEL SALES

#101-7187 PROGRESS WAY  
 DELTA, BC, V4G-1K8  
 TEL. (604) 940-6400  
 FAX. (604) 940-6500  
 E-MAIL: delta@klassenengine.com

### KLASSEN DIESEL SALES

6701 OLDFIELD RD.  
 SAANICHTON, BC, V8M-2A1  
 TEL/FAX (250) 652-6655  
 E-MAIL: victoria@klassenengine.com