

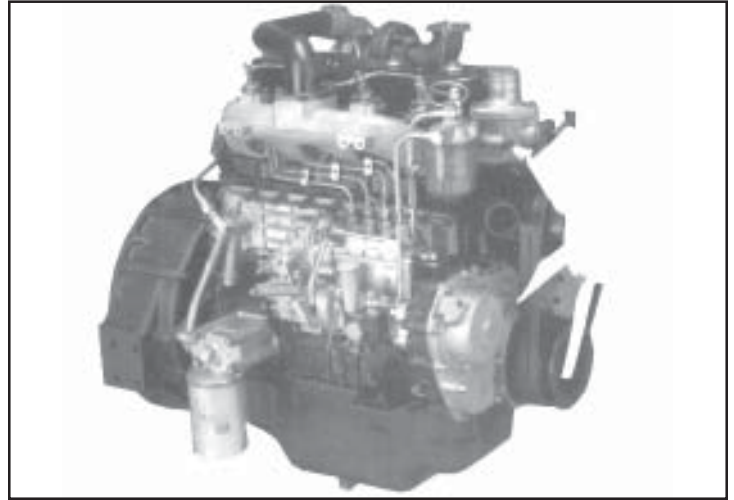
SUZIE 100 H.P. MARINE DIESEL



Suzie
DIESEL

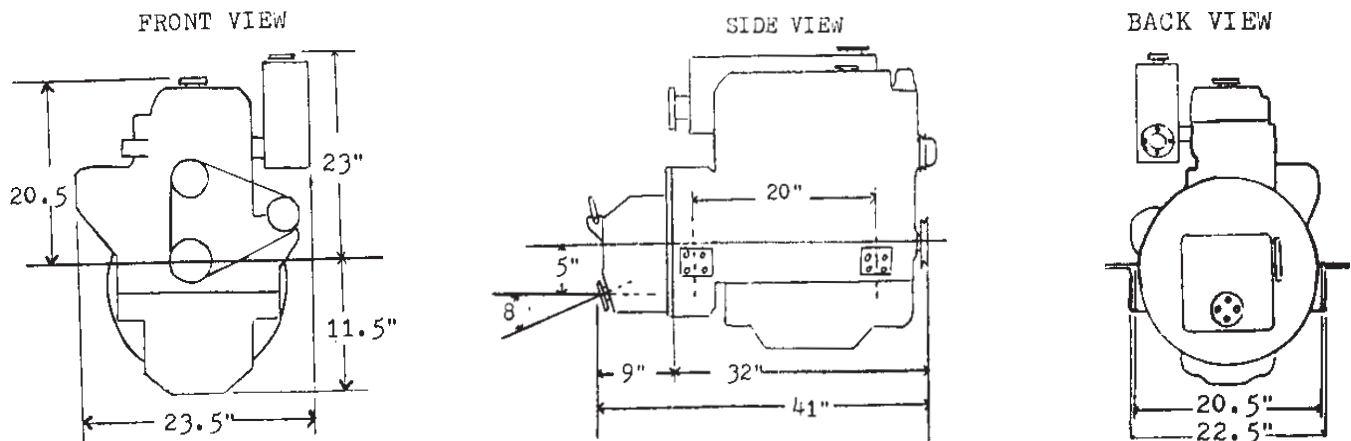
4BG1 RATINGS:

Intermittant at sealevel (60 degrees)
100 b.h.p. @ 2800 r.p.m.
 Continuous at sealevel (60 degrees)
78 b.h.p. @ 2500 r.p.m.
 Torque at sealevel (60 degrees)
224 ft.lbs. @ 1600 r.p.m.



| ENGINE SPECIFICATIONS | MARINE GEAR SPECIFICATIONS |
|--|---|
| Model Number: Isuzu 4BG1 Type: Four stroke, water cooled 4 cylinder Combustion: Direct injected, induction swirl Bore & Stroke: 4.13in x 4.92in (105mm X 125mm) Piston Displacement: 264 c.i.d. (4.3 litres) Engine Rotation: Counter Clockwise facing flywheel Dry Weight: 865 lbs.(401 kg.). With Gear: 930 lbs.(422kgs.) Lube Oil Capacity: 13.7 quarts (13 litres) Coolant Capacity (engine only): 9 quarts (8.5 litres) Aspiration: Natural | Model: Hurth HSW 450* Engagement: Hydraulically actuated Gear Housing: High strength aluminum Prop Rotation: Left hand or right hand Reduction: Choice of 1.5, 2.0, 2.5 to 1 Oil Grade: ATF Capacity: 2.3 quarts (2 litres) Includes: Fresh water gear cooler <i>* Optional Borg Warner, or gear of choice.</i> <i>** Non down angle output available</i> |

ENGINE AND MARINE GEAR DIMENSIONS



VISIT OUR WEBSITE: www.klassenengine.com

4BG1 FEATURES AND ACCESSORIES

12 VDC electrical with gear reduction starter
 Cold weather glow plug assist starting
 SAE#3 bellhousing with SAE 10in. overcentre flywheel
 Replaceable chromard dry liners
 Direct injection with square combustion chambers for efficiency
 Oil cooled pistons
 Tuftrided crankshaft

STANDARD ACCESSORIES

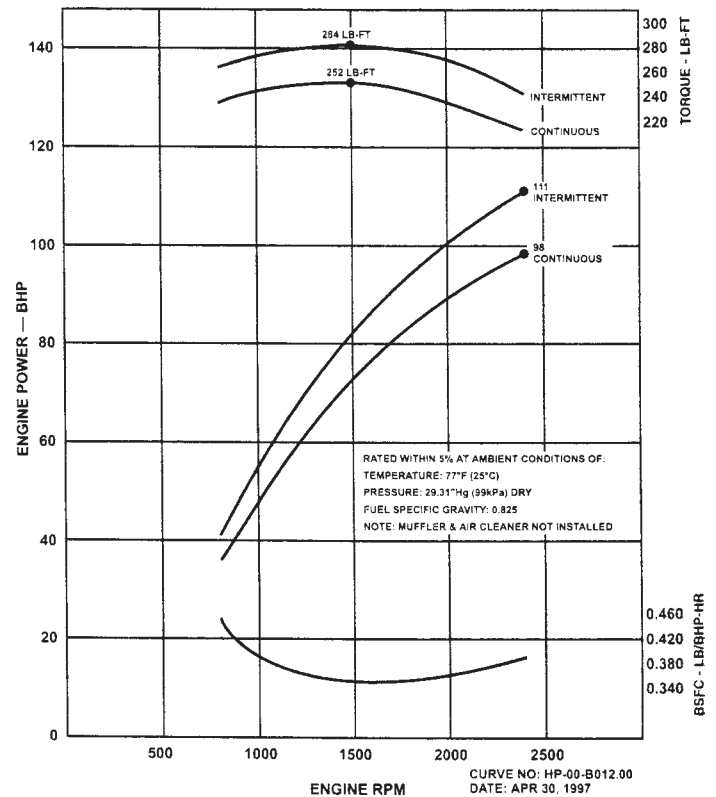
Set up for keel cooling
 60 AMP stock alternator
 air cleaner
 Steel footings
 Engine oil change pump
 Water cooled dry exhaust manifold
 Lube oil and secondary fuel filters
 20ft wire harness length

Black plastic panel with:
 Tach with hour meter, oil p.s.i., water
 temperature, volt or amp meter,
 key start, glow plug indicator
 Available with or without expansion tank

OPTIONAL ACCESSORIES

90, 105 and 130 amp alternator upgrades
 10ft. or 20ft. wire harness extensions
 Low oil p.s.i./high temp. buzzer alarm
 vibration isolators
 Dual stations
 Bellhousing to gear adapter plate
 Standard drive disc
 Heat exchanger kit, which includes:
 1) remote mounted heat exchanger
 2) belt driven or direct coupled raw water pump
 3) optional exhaust mixing elbow

HORSEPOWER AND FUEL CONSUMPTION CURVES:



KLASSEN ENGINE CO.

1538 NW 50 TH ST.
 SEATTLE, WA. 98107
 TEL. (206) 784-0148
 FAX. (206) 783-6811
 TOLLFREE 1-888-784-0148
 E-MAIL: seattle@klassenengine.com

KLASSEN DIESEL SALES

#101-7187 PROGRESS WAY
 DELTA, BC, V4G-1K8
 TEL. (604) 940-6400
 FAX. (604) 940-6500
 E-MAIL: delta@klassenengine.com

KLASSEN DIESEL SALES

6701 OLDFIELD RD.
 SAANICHTON, BC, V8M-2A1
 TEL/FAX (250) 652-6655
 E-MAIL: victoria@klassenengine.com